

Igor Balaban

ITI 2010 Workshop:

Teaching with Web 2.0 Tools: Evaluation, Pedagogy and Integration Solutions

**Google Docs: on-line
environment for mobility**

Google Talk / Wave

Mahara ePortfolio

Google Apps / Google Accounts

■ Google Apps



[Gmail](#)

E-pošta s brzim pretraživanjem i manje neželjenih poruka



[Kalendar](#)

Organizirajte svoj raspored i dijelite događaje s prijateljima

Google Talk



[Dokumenti](#)

Napravite i podijelite Vaš posao na mreži



Google Video



Google Sites

■ Google Accounts



[Blogger](#)

Napišite svoj blog



[Dokumenti](#)

Napravite i podijelite Vaš posao na mreži



[Gmail](#)

E-pošta s brzim pretraživanjem i manje neželjenih poruka



[Grupe](#)

Izradite popis adresa i grupe za diskusiju



[Kalendar](#)

Organizirajte svoj raspored i dijelite događaje s prijateljima



[Picasa](#)

Pronađite, uredite i pokažite svoje slike



[iGoogle](#)

Dodajte vijesti, igre i ostalo na Google početnu stranicu

Google Docs

- online Web application for editing and sharing documents, spreadsheets, presentations and forms
- contains basic features of Office tools so it can open and edit almost any Microsoft Office or OpenOffice file format as well as view PDFs
- limitations:
 - 5,000 documents and presentations,
 - 5,000 pictures
 - 1,000 spreadsheets
- max. number of simultaneously opened documents: 11

Google Docs

▪ Pros

- Online application
- Easy to use
- Document sharing and collaboration
- Integration with desktop applications
- Document can be published as a Web page
- Enables document search
- Very easy and fast data gathering with Forms
- It supports opening the documents that are stored both online and offline(on local computer)

▪ Cons

- Only basic Office functionalities
- Incompatibility with documents containing advanced functions and formats (MailMerge, PowerPoint transitions and effects, cells locking in Excel...)

Google Docs

The screenshot shows the Google Docs web interface. At the top, there are navigation links for Gmail, Calendar, Documents, Reader, Web, and more. The user's email address, igor.balaban@gmail.com, is displayed along with links for 'New! Share a folder', 'Offline', 'Settings', 'Help', and 'Sign out'. Below the navigation bar, there is a search bar for 'Search Docs' and 'Search Templates', along with links for 'Show search options' and 'Browse template gallery'. The main content area is titled 'My folders > iCamp project' and includes a 'Share this folder' link. A toolbar contains buttons for 'Share', 'Move to', 'Folders', 'Delete', 'Rename', and 'More actions'. A table lists five documents:

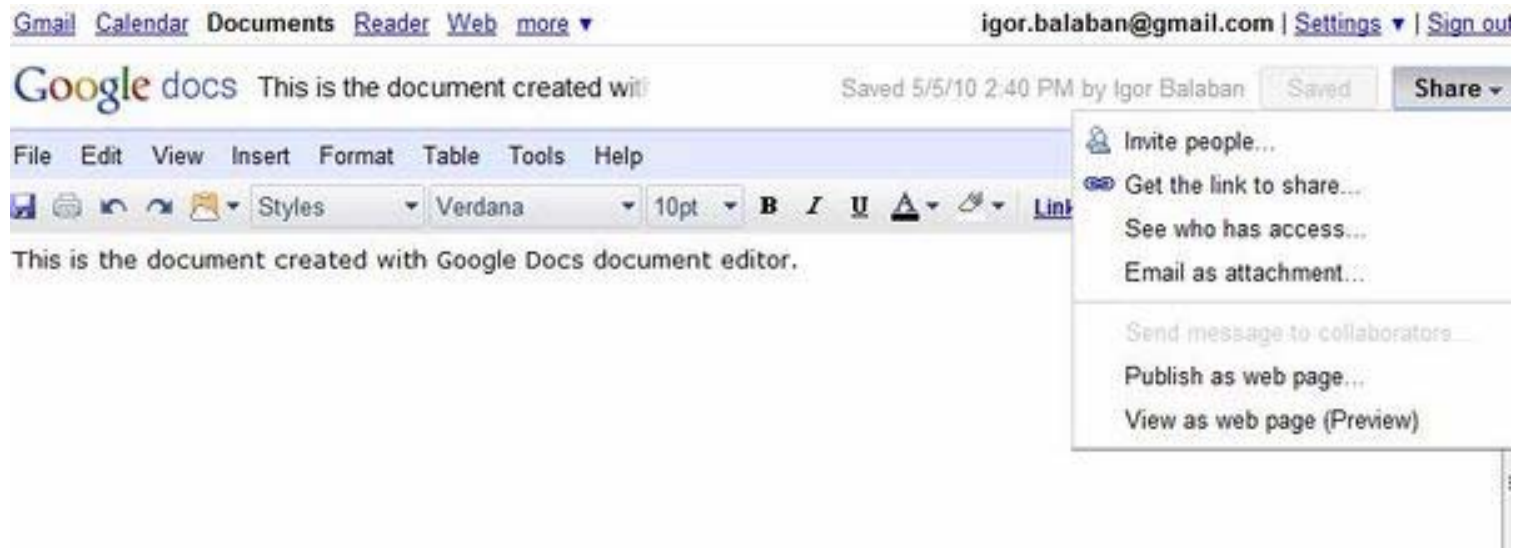
	Name	Folders	Date	
OLDER				
<input type="checkbox"/>	<input type="checkbox"/> iCamp Social software tools	Not	3/13/08	me
<input type="checkbox"/>	<input type="checkbox"/> Student information	Not	3/7/08	me
<input type="checkbox"/>	<input type="checkbox"/> Za ugovor, papiri	Not	2/22/08	me
<input type="checkbox"/>	<input type="checkbox"/> iCamp - Facilitators main tasks and tools	Not	2/21/08	me
<input type="checkbox"/>	<input type="checkbox"/> Trials3 - Facilitators meeting	Not	2/17/08	me

On the left side, there is a sidebar with 'Create new' and 'Upload' buttons, and a list of navigation options including 'All items', 'Owned by me', 'Opened by me', 'Shared with me', 'Starred', 'Hidden', 'Trash', 'Items by type', and 'More searches'. Under 'My folders', the 'iCamp project' folder is selected, showing 'No folders.' inside it. Other folders listed are 'IPC project' and 'Folders shared with me', both also showing 'No folders.'

Google Docs environment: docs.google.com

Google Docs *Documents*

- online text editor equivalent to desktop tools such as MS Office Word or OpenOffice Writer
- can be used for basic and advanced text editing although with some restrictions comparing to its desktop equivalents
- allows user to create or import a document, to edit it alone or with other users and to publish, export or save the document online



Google Docs *Documents*

■ Pros

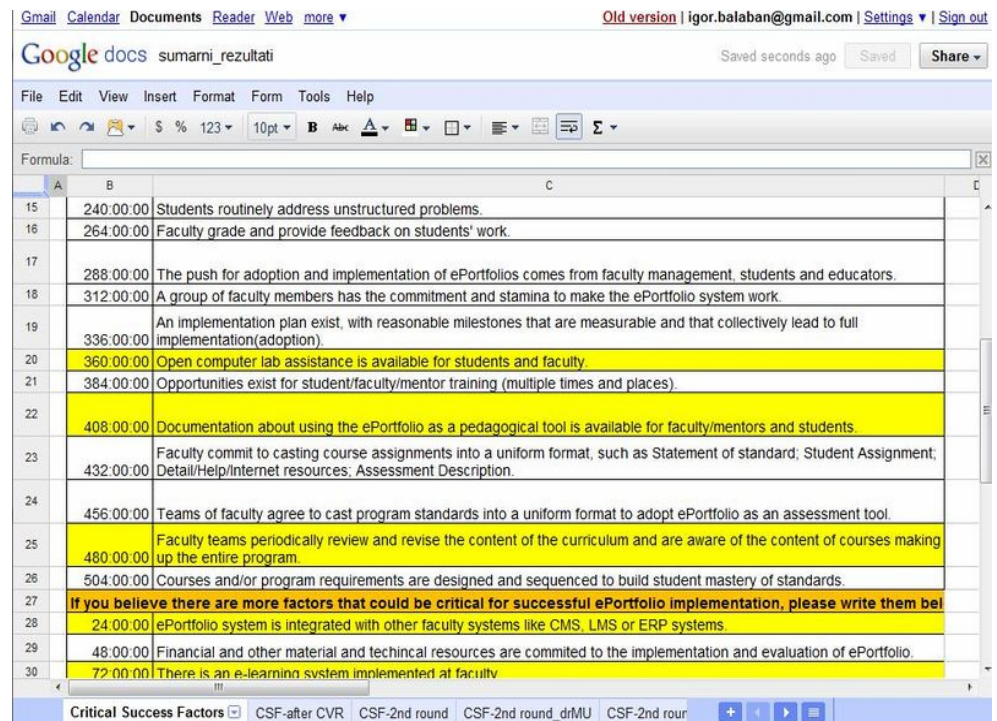
- Interface is very similar to previous versions of MS Office and equivalent to the newest version of OpenOffice
- Strong support for import and export formats
- Enables document sharing and real-time collaboration
- Variety of text editing features adequate for average users
- Tight integration with OpenOffice suite

■ Cons

- Does not support advanced features such as MailMerge, Page&Section Brakes, Tables of Contents...
- Text formats are lost when importing document with advanced formating options (i.e. table formats, comments...)

Google Docs *Spreadsheets*

- online spreadsheet editor equivalent to desktop tools such as MS Office Excel or OpenOffice Calc
- can be used for basic and advanced spreadsheet editing although with some restrictions comparing to its desktop equivalents
- allow user to create or import a spreadsheet, to edit it alone or with other users and to publish, export or save the document online



The screenshot shows a Google Docs spreadsheet interface. The title bar indicates the document is 'sumarni_resultati' and it was saved 'seconds ago'. The spreadsheet has columns A, B, and C. The data is as follows:

A	B	C
15	240:00:00	Students routinely address unstructured problems.
16	264:00:00	Faculty grade and provide feedback on students' work.
17	288:00:00	The push for adoption and implementation of ePortfolios comes from faculty management, students and educators.
18	312:00:00	A group of faculty members has the commitment and stamina to make the ePortfolio system work.
19	336:00:00	An implementation plan exist, with reasonable milestones that are measurable and that collectively lead to full implementation(adoption).
20	360:00:00	Open computer lab assistance is available for students and faculty.
21	384:00:00	Opportunities exist for student/faculty/mentor training (multiple times and places).
22	408:00:00	Documentation about using the ePortfolio as a pedagogical tool is available for faculty/mentors and students.
23	432:00:00	Faculty commit to casting course assignments into a uniform format, such as Statement of standard; Student Assignment; Detail/Help/internet resources; Assessment Description.
24	456:00:00	Teams of faculty agree to cast program standards into a uniform format to adopt ePortfolio as an assessment tool.
25	480:00:00	Faculty teams periodically review and revise the content of the curriculum and are aware of the content of courses making up the entire program.
26	504:00:00	Courses and/or program requirements are designed and sequenced to build student mastery of standards.
27	If you believe there are more factors that could be critical for successful ePortfolio implementation, please write them below.	
28	24:00:00	ePortfolio system is integrated with other faculty systems like CMS, LMS or ERP systems.
29	48:00:00	Financial and other material and technical resources are committed to the implementation and evaluation of ePortfolio.
30	72:00:00	There is an e-learning system implemented at faculty

Google Docs *Spreadsheets*

■ Pros

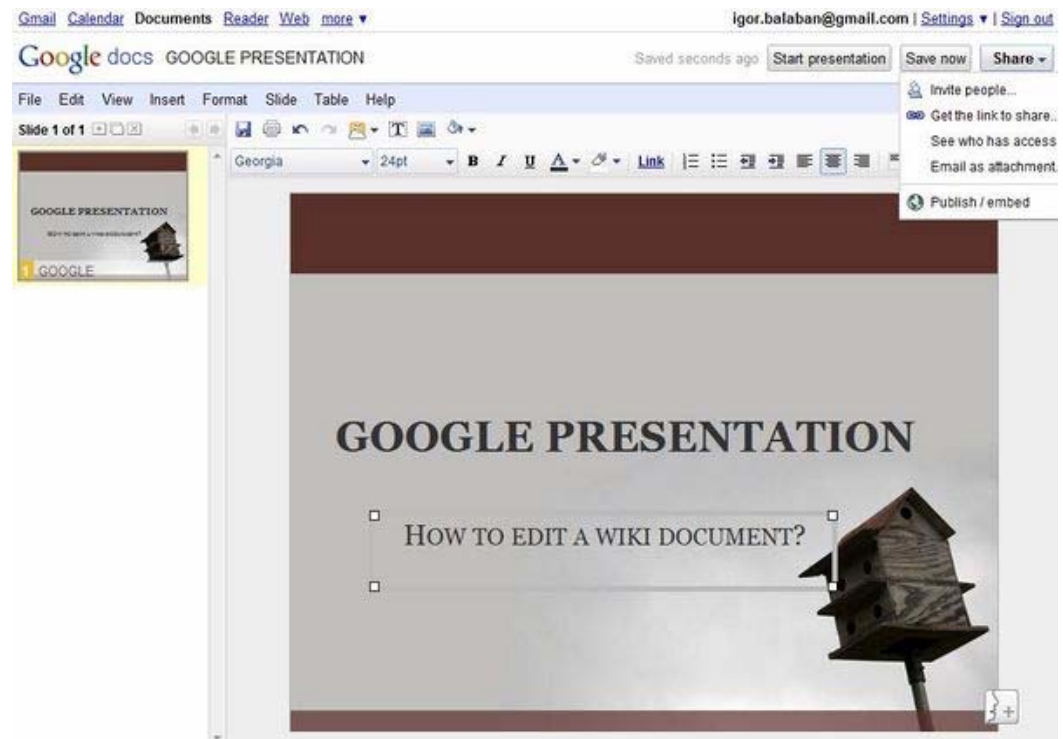
- Interface is very similar to previous versions of MS Office and equivalent to the newest version of OpenOffice
- Strong support for import and export formats
- Enables document sharing and real-time collaboration
- Supports variety of functions adequate for average and advanced user (such as sheet protection, data validation, solver, freezing option...)
- Tight integration with OpenOffice suite

■ Cons

- Troubles when importing spreadsheets created with other applications (lost formats and formulas)

Google Docs ***Presentations***

- online presentation editor equivalent to desktop tools such as MS Office PowerPoint or OpenOffice Impress
- can be used for basic and advanced presentation editing although with some restrictions comparing to its desktop equivalents
- allow user to create or import a presentation, to edit it alone or with other users and to publish, export or save the presentation online



Google Docs *Presentations*

■ Pros

- The best tool for easy and quick presentation creating
- Interface is very similar to previous versions of MS Office and equivalent to the newest version of OpenOffice
- Enables presentation sharing and real-time collaboration
- Supports variety of functions adequate for average user
- Tight integration with OpenOffice suite

■ Cons

- No support for advanced functions such as managing master slide, rehearsals, advanced slide transitions...
- Very restricted import options
- So far not intended for importing presentations with advanced features such as complex formats and advanced slide transitions

Google Talk

- Instant Messenger(IM)
- offers support for video chat and enables users to chat from their desktops as well as to send/receive files
- **Pros**
 - Very good alternative to other IM tools
 - Lightweight
 - Easy to use
- **Cons**
 - Advanced users will lack certain functions



Select a language [Help](#)

Check out the following ways to chat on the web and on your desktop:

Video and voice plug-in



- Chat within Gmail, iGoogle, and orkut
- All on the web
- PC and Mac

[Learn more »](#)

[Install video chat plug-in](#)

Requires Windows XP + or
Mac OS X 10.4 +

Google Talk software



- Chat from your desktop
- Send and receive files
- PC only

[Learn more »](#)

[Download Google Talk](#)

Requires Windows XP or later

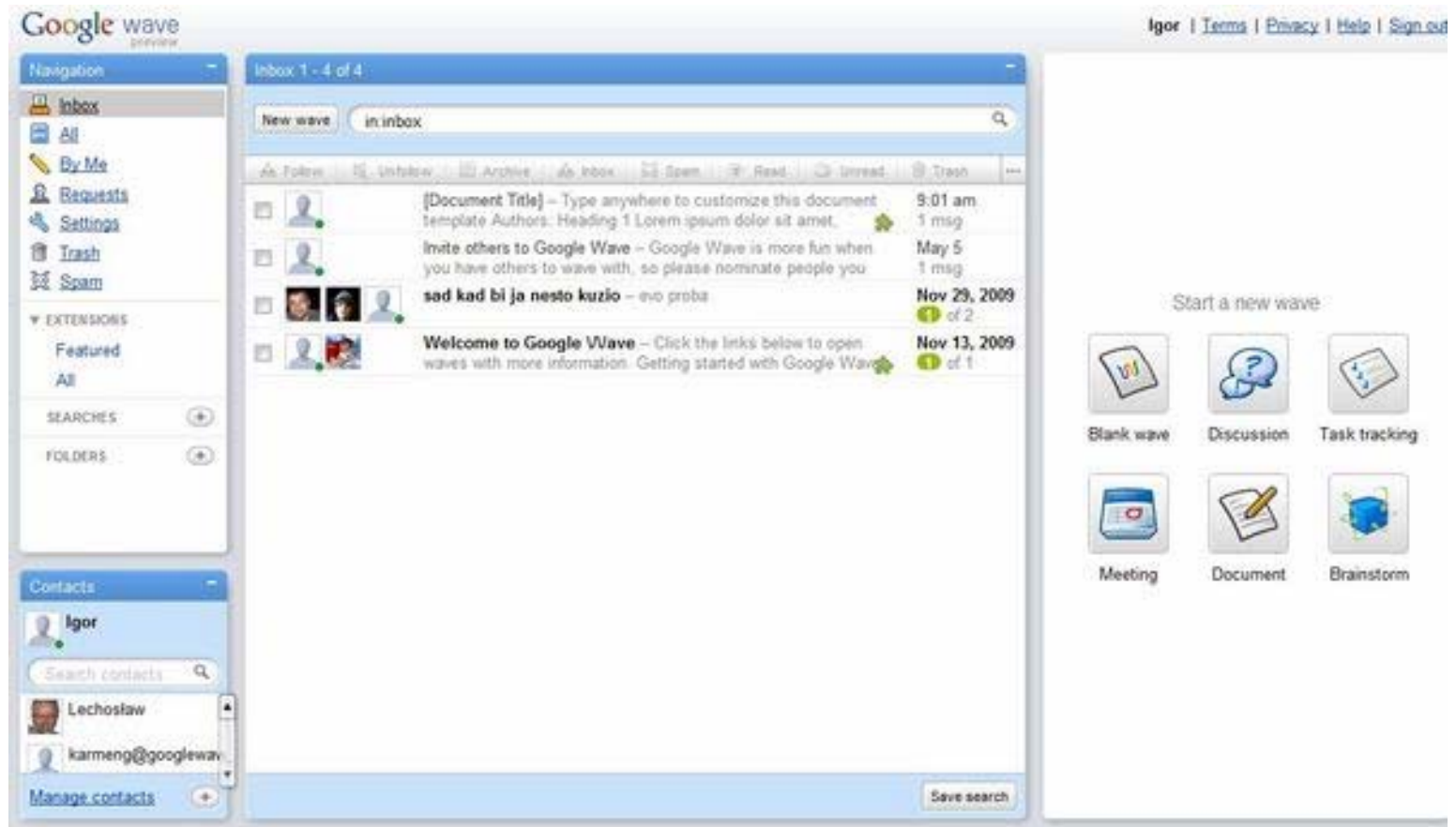
By downloading, you agree to our
[Terms of Service](#) and [Privacy Policy](#)

Note that Google Talk is not a telephony service and cannot be used for emergency dialing

Google Wave

- application for real-time communication and collaboration
- **the idea:** to develop a system that would integrate advantages of e-mail and forums in real-time
- the backbone of the system is a wave which behaves like a thread and it can be in a form of discussion, document, message etc.
- **Pros**
 - Very easy document exchange (supports drag&drop)
 - Improves communication between two or more persons
 - Free
 - It could replace e-mail messages in the future
- **Cons**
 - No Gmail integration
 - Not accepted as expected so far

Google Wave



Thank you!

Igor Balaban, M.A.
igor.balaban@foi.hr